

KASA

KOREA AUTO-VEHICLE SAFETY ASSOCIATION



About Academic Society

◆ Purpose of Academic Society

The society aims to contribute to the development of the industry and the establishment of a safety culture by promoting academic and technological development, policy establishment, industrial support, and international cooperation related to automotive safety, in accordance with the Act on the Establishment and Operation of Public Interest Incorporated Associations for the benefit of society at large.

◆ Background and Necessity of Academic Society

- There is an urgent need for the establishment and operation of a system to provide comprehensive support and cooperative functions related to automotive safety in reality.

- The importance of international cooperation, education, participation, response, and the related role is increasing.

- Due to the absence of a specialized conference with differentiation and specialization in automobile policies, this academy society was established in January 2007 to improve and supplement the existing problems.

◆ Goal of Academic Society

- To establish a support system that can promote the systematic formulation of government policies, support from the industry, enhancement of international cooperation, and improvement of safety capabilities in the automobile safety-related sector of the Ministry of Land, Infrastructure and Transport.

- To achieve a higher level of completeness in the Ministry of Land, Infrastructure, and Transport's mobility-related tasks by expediting a reputable society that is recognized by the public, industry, and academia

- To formulate and develop a specialized professional academic society focused on automobile policy, differentiated from existing societies or organizations

◆ Major Tasks of Academic Society

- Research and investigation on regulations, policies, and safety standards related to automobiles

: Matters related to management systems such as recalls, safety evaluations, inspections, and registrations

① Matters related to international cooperation and international standards, such as WP29 and APEC

② Matters related to the International Technical Conference on the Enhanced Safety of Vehicles (ESV)

③ Other matters related to automotive safety

- Advisory, collaboration, and recommendation for the establishment of automotive safety policies

- Organizing academic conferences (twice a year), seminars, and training sessions (twice a year), as well as a future mobility competition for university students

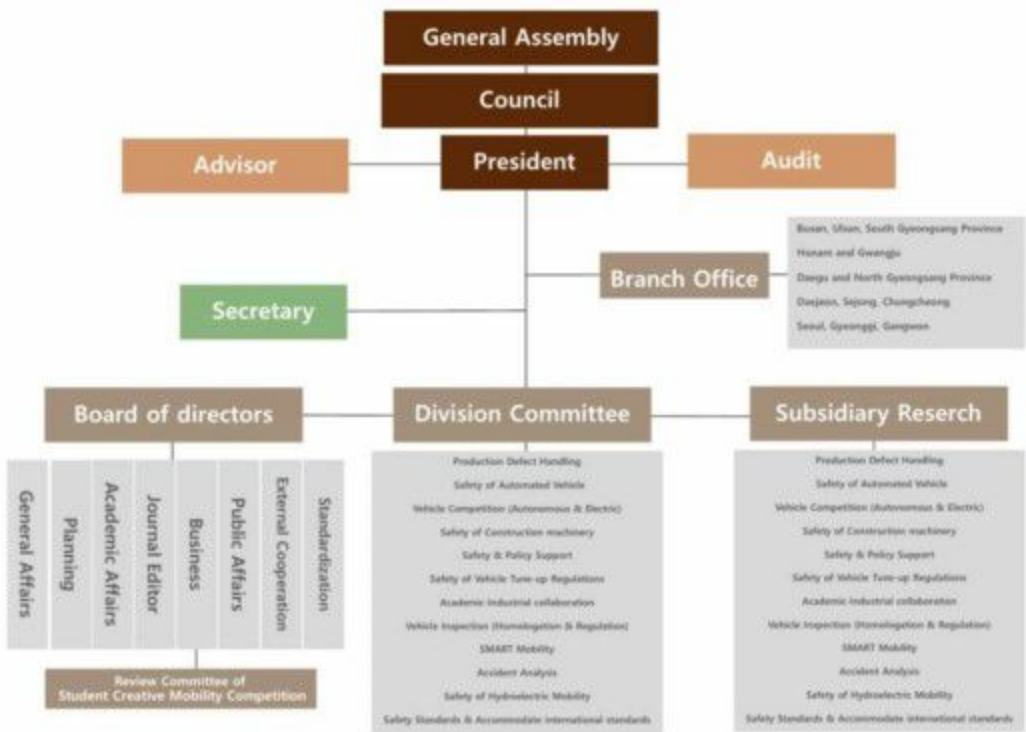
- Publishing and distributing the Journal of Automotive Safety (4 times a year, indexed in KCI) and other publications

- Commendation for contributions and encouragement of research

About Organization Chart

In this academic society, in addition to activities targeting all members, specialized committees are organized by each field to perform unique activities. Unlike the diversity in fields that the entire society has, members can have an in-depth exchange of technology and establish a relationship between technical personnel in their respective fields. Members can participate in any specialized committee as desired.

Furthermore, in order to lead government policies and suggestions related to car safety and to participate in and contribute to the activation of the Fourth Industrial Revolution, including autonomous driving cars, a research institute has been established in 2020. Through this, research projects are systematized to actively respond to changes in the car environment and induce qualitative improvement of entrusted research and service projects.



About Membership

◆ Annual Individual Membership

A person who is engaged in research and development related to automobile safety and has expertise and experience in this field.

(Regular membership fee: 50,000 won, Associate membership fee: 30,000 won (up to master's degree program))

◆ Lifetime Membership

15 years of annual membership fees are required.

Those who are between 51 and 60 years old need to pay for 10 years of fee.

Those who are 61 years old or older need to pay for 5 years of fee.

◆ Special Membership (Corporate Membership)

It refers to an organization that pays membership fees to support and participate in the activities of the society, in addition to individual members.

classification	Annual Fee	Annual revenue of the corresponding company
# 1	30 million won	more than 4 trillion won
# 2	20 million won	more than 2 trillion won
# 3	10 million won	more than 1 trillion won
# 4	5 million won	more than 500 billion won
# 5	3 million won	more than 100 billion won
# 6	2 million won	more than 50 billion won

Benefits for corporate members: Membership benefits for conferences and events held in the spring and fall (exempt from registration fees, with limitations on the number of participants according to the member's grade), invitations to receptions and meetings (dinners or exercise) with the association's executive members and decision-makers, invitations to the member company's New Year's greeting and year-end parties, company advertisements in the proceedings of spring and fall academic conferences, opportunities to receive information and exchange technical information on all events organized by the association, recent trends and changes in international automotive safety standards provided, and opportunities to participate in forums related to automotive safety standards and policies, organized by industry, academia, research, and government institutions

◆ You can apply for membership by filling out the membership application form and submitting it along with the membership fee to the account below, or by applying online through the association's website.

* Application and inquiries: Association Secretariat

* Online transfer: Hana Bank 428-910009-95204

* Account name: 사단법인한국자동차안전학회 (Society of Automotive Safety Korea (KSAE))